



# GAT MONTHLY MEMBERSHIP PROGRESS REPORT

Results as of: 5/31/2023

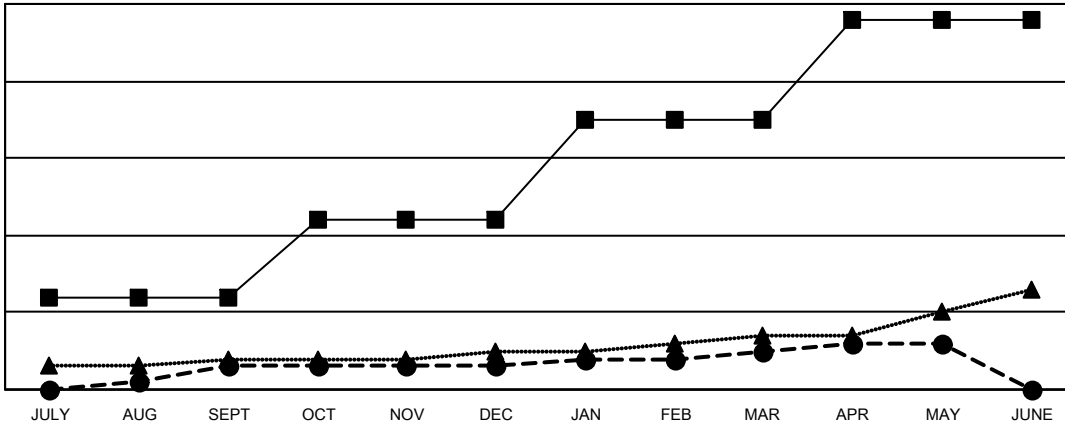
Multiple District 4

LOCATION: CALIFORNIA

Clubs			
RESULTS FOR 2022-2023			
QUARTER	NEW CLUB GOAL	NEW CLUBS	DROPPED CLUBS
JULY/AUG/SEPT	12	3	3
OCT/NOV/DEC	10	0	14
JAN/FEB/MAR	13	2	3
APR/MAY/JUNE	13	1	2

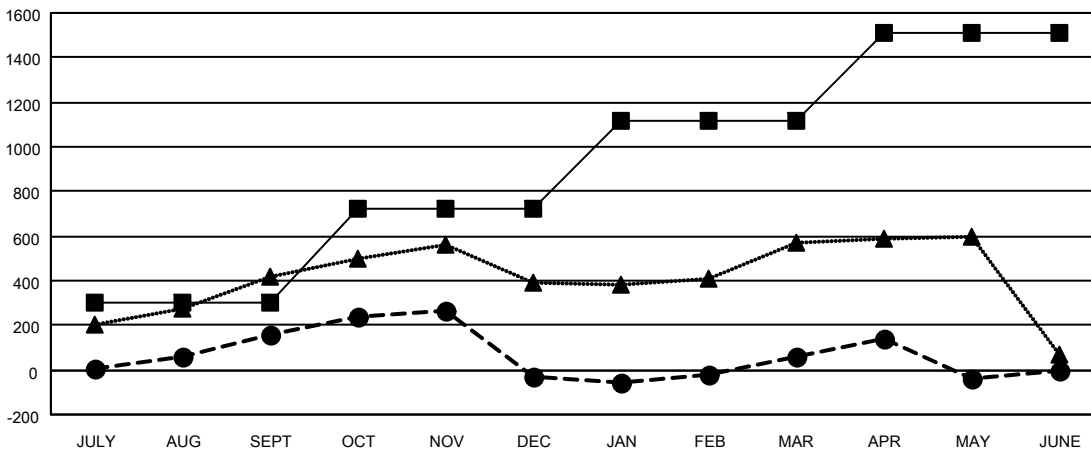
Members			
RESULTS FOR 2022-2023			
QUARTER	MEMBER GROWTH NET GOAL	MEMBER GROWTH ACTUAL	DROPPED MEMBERS ACTUAL (including transfers)
JULY/AUG/SEPT	300	826	600
OCT/NOV/DEC	422	590	716
JAN/FEB/MAR	395	745	518
APR/MAY/JUNE	391	483	530

GOALS AND ACTUAL NEW CLUBS CUMULATIVE



- CURRENT YEAR GOALS FOR NEW CLUBS
- CURRENT YEAR ACTUAL NEW CLUBS
- ▲- LAST YEAR ACTUAL NEW CLUBS

GOALS AND ACTUAL MEMBERS CUMULATIVE



- MEMBER GROWTH NET GOAL
- MEMBER GROWTH ACTUAL
- ▲- LAST YEAR MEMBERSHIP ACTUAL

DROPPED CLUBS: 22	
<b>DROPPED MEMBERS</b>	
DECEASED	243
CLUB CANCELLED	151
OTHER	1,970
<b>TOTAL</b>	<b>2,364</b>

447 CLUBS OF 691 ADDED 1 OR MORE NEW MEMBERS

[CLICK HERE FOR CUMULATIVE MEMBERSHIP DATA](#)

GENDER DISTRIBUTION	
MALE	10,576 (57.67%)
FEMALE	7,748 (42.25%)
NON BINARY	1 (0.01%)
PREFER NOT TO ANSWER	14 (0.08%)
<b>TOTAL FAMILY UNIT MEMBERS</b>	<b>3,428</b>
<b>FAMILY MEMBERS PAYING HALF DUES</b>	<b>1,821</b>